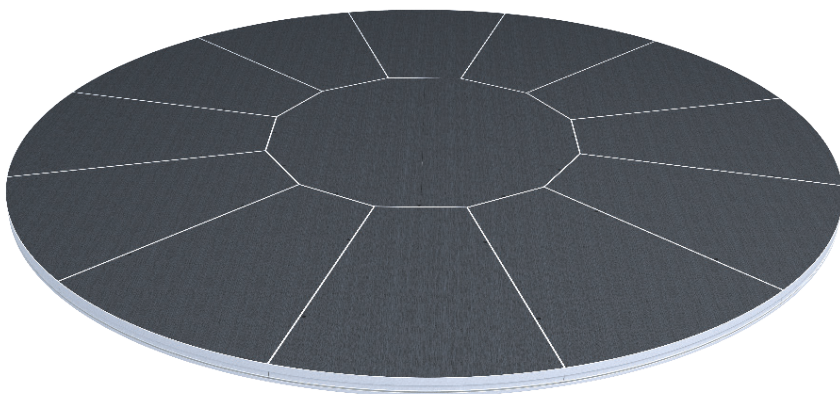


WICREATIONS

WIMOTION

TURN TABLE TP02



WI

PC BY EXODUS

GENERAL INFO

The TP02 turntable is a plug-and-play solution engineered to minimize load-in and load-out times, delivering efficiency and convenience. With just a few components required for assembly —2 parts for the 2-meter table and 20 parts for the 5-meter table— setup is quick and straightforward.

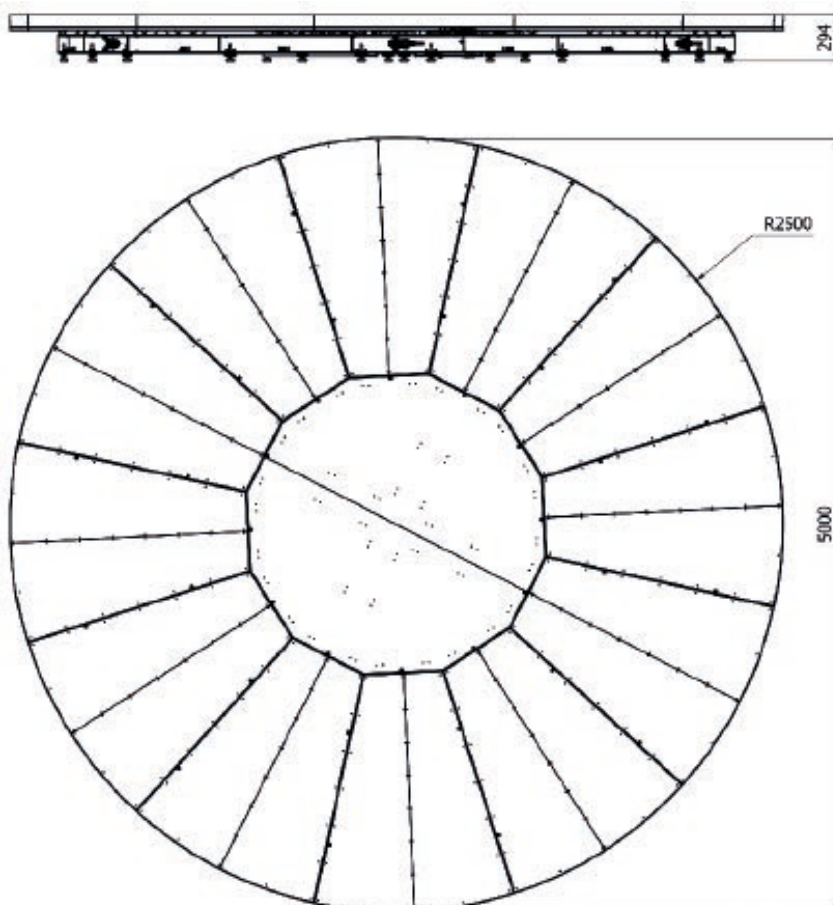
Once installed, the TP02 is immediately operational and seamlessly integrates with our advanced motion control software, giving you complete control at your fingertips.

At its core, the TP02 features a built-in slip contact, enabling an infinite rotation loop. This ensures uninterrupted power and data supply, making it the perfect fit for any production system requiring consistent connectivity.

MEASUREMENTS.

This table has a very compact installation height of max. 350mm. To make sure the table fits every time, we made it adjustable in height. From 295 till 350mm.

The TP02 turn table has a diameter of 2m (inner table). This part hosts all technical equipment to make it turn. There is also a possibility to enlarge this table to a 5m turn table.



Pic. 1 - Measurements

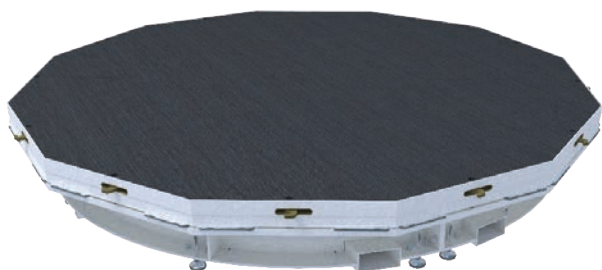
TECHNICAL SPECIFICATIONS.

2m turn table

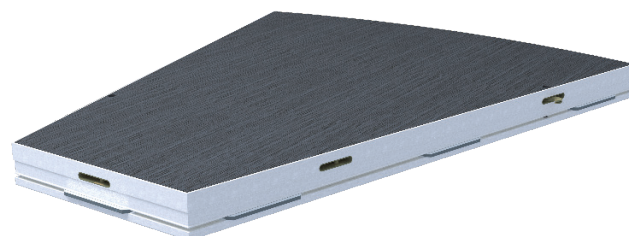
Own weight:	250kg
Max. static load:	500kg/m ²
Max. dynamic load:	100kg/m ²
Speed:	
With a runner of 1:60	
- 2,2rpm	
- Edge speed:	227 mm/sec
- Max load:	1.500kg

5m turn table

Own weight:	900kg
Max. static load:	500kg/m ²
Max. dynamic load:	100kg/m ²
Speed:	
With a runner of 1:60	
- 2,2rpm	
- Edge speed:	568 mm/sec
- Max load:	2.000kg
(the ability of the runner is normative)	



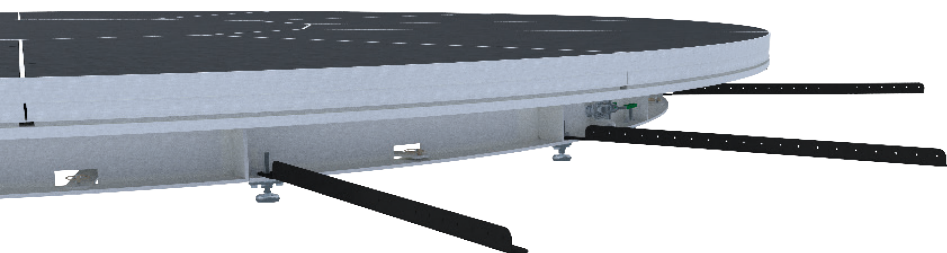
Pic. 2 - 2m inner piece



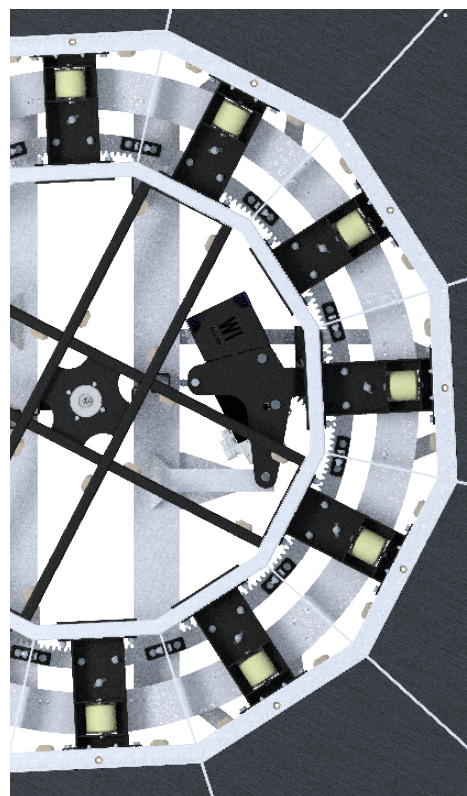
Pic. 3 - extension element

Very precise positioning by means of a toothed gear drive. The stability of the table is accomplished by a circle of polyamide heavy duty wheels which are each accompanied by an RVS guiding wheels.

The turn table is connected to the other stage elements by 12 steel connection elements.



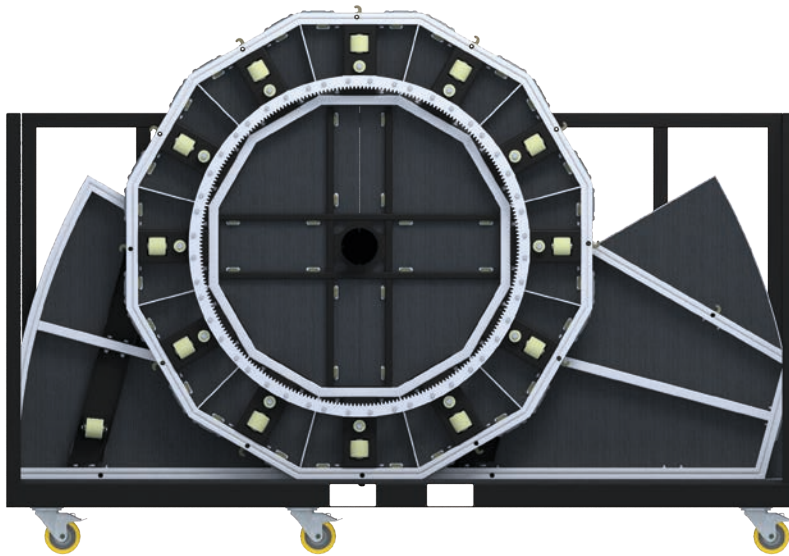
Pic. 4 - Connection profiles



Pic. 5 - Toothed gear and drive wheels

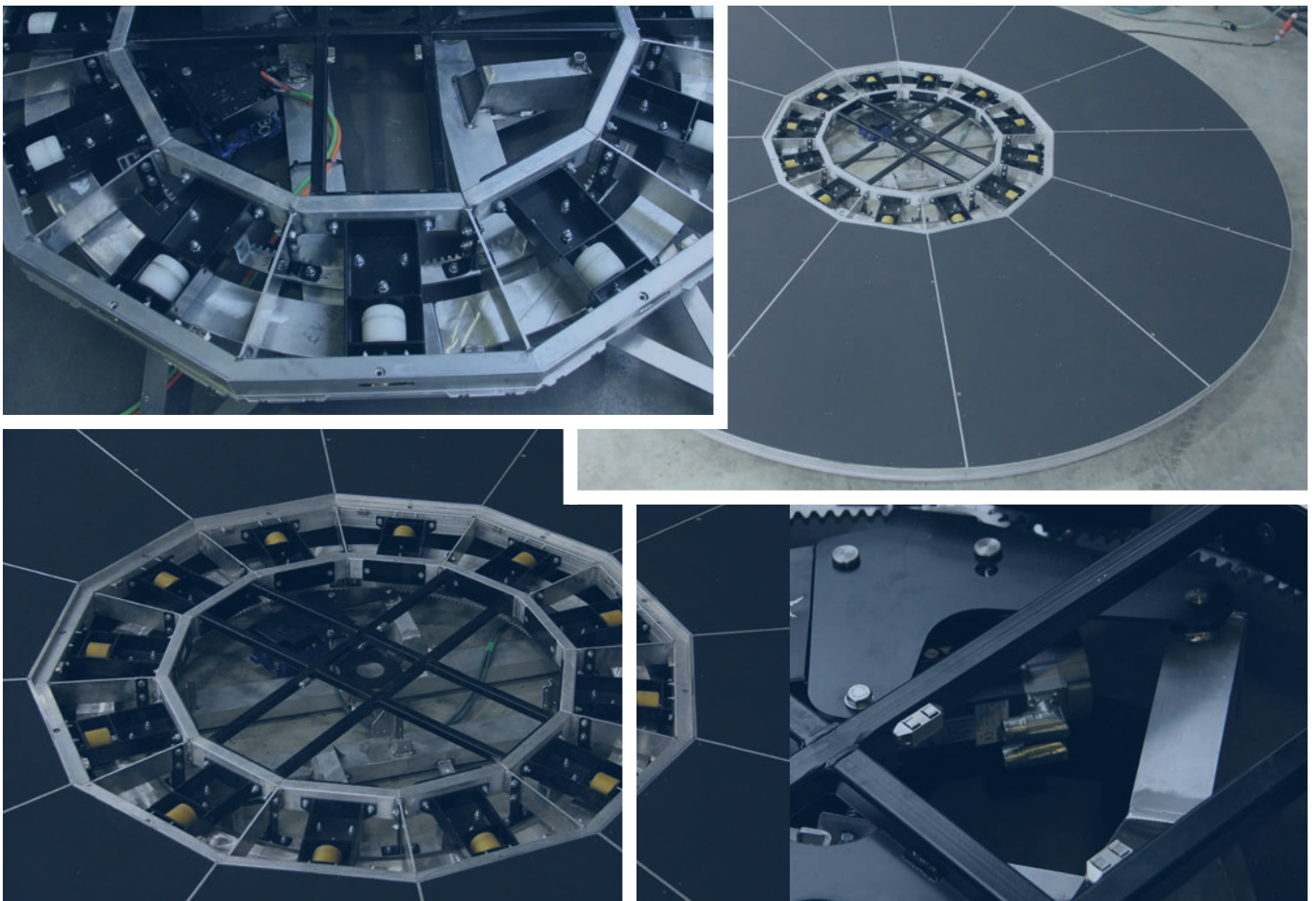
TRANSPORT.

Each turn table fits inside one transportdolly.

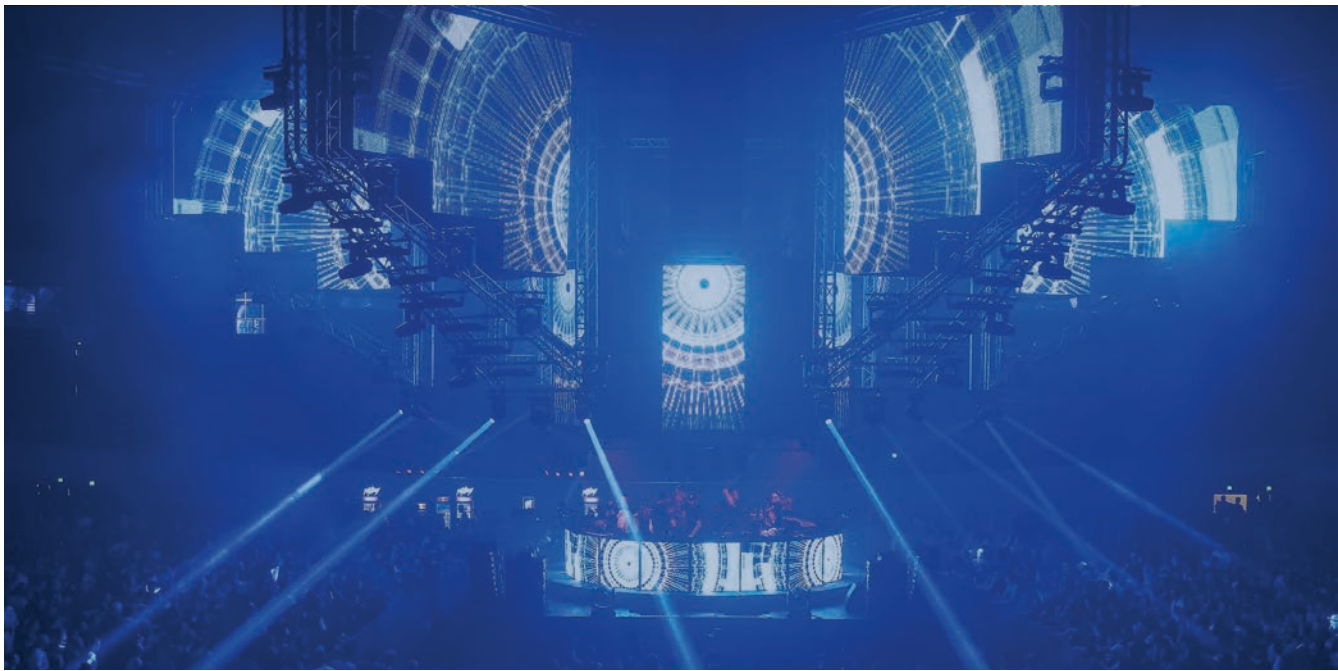


Pic. 6 - Transportdolly

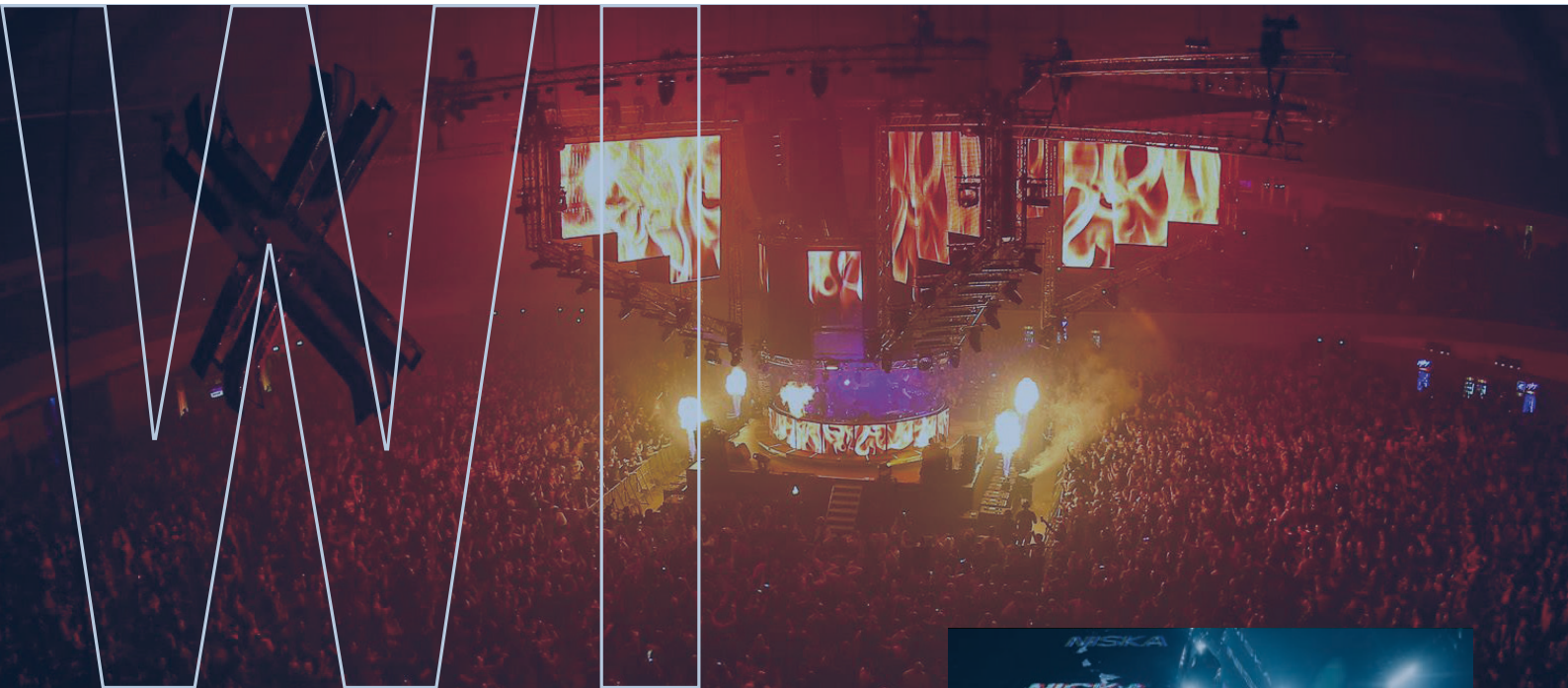
PICTURES.



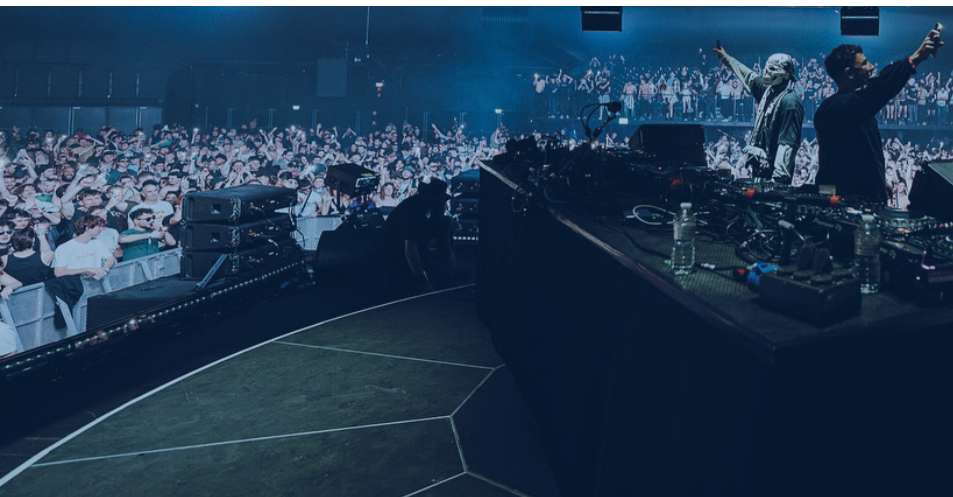
Pic. 7-10 - Technical pictures



Pic. 11 - Exodus 2016



Pic. 12 - Exodus 2016



Pic. 13 - FCKNYE 2024, Paleis 12



WICREATIONS

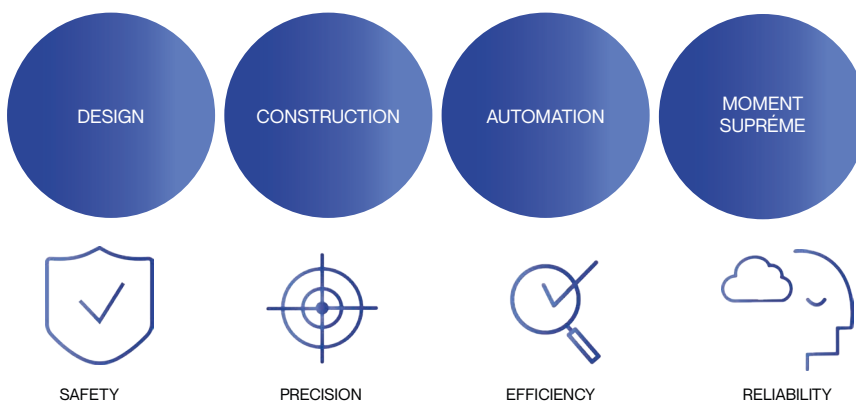
With WICREATIONS founded by Hans Willems in 2005, we are a world player in entertainment engineering, motion control, scenic and staging solutions for the live event sector. Our portfolio includes 250+ national and international shows, tours, festivals, theme parks, television and film productions, fashion events, sports and corporate shows. Amongst our clients we can count the biggest bands on earth such as The Rolling Stones, Rammstein, Ed Sheeran as well as local heroes and DJ's.

CORE BUSINESS

With WICREATIONS we are gamechangers in prime motion technologies that create unique and spectacular upper and lower stage effects. A wide range of integrated systems and structures such as stage elevators, fly winches, moving hoists, tracking systems, turn tables and rotators are also available either on a rental base or complemented with custom fabricated elements, all of these operated via WIMOTION, our proprietary stage motion control system.

During the pandemic we further developed the WIMOTION ecosystem: a 360° cloud solution for all motion elements of a project aimed at facilitating pre-show collaboration and feedback thanks to realtime previsualization.

We combine passion for the entertainment industry with an unwise addiction to tech and a stubborn focus on always delivering the best solution ever.



Please find more details on our website: www.wicreations.com

How to shift our focus towards a more sustainable company and circular production?

SUSTAINABILITY

WI sure are high flying birds as to our core business, but the last couple of years we clearly felt the urge with many WI people, clients and audiences to do more and give back to nature, planet and people.

September 2021 we stepped into the 3-year UN sustainability program for a structural approach supported by VOKA expertise, the Belgian Chamber of Commerce.



KEY FOCUS AREAS

9 areas have been selected grouping clearly defined actions within the 17 UN SDG's guided by 3 driving principles:



Alertness to always consider the most sustainable approach in every action big or small we undertake



Equal respect, opportunities and a non judgemental environment for everyone



Support for ideas that aid the achievement of new green technologies and sustainable targets