

WICREATIONS

WISTAGE

WI

PHOTO BY LINDSAY ORF

WHAT IS WISTAGE

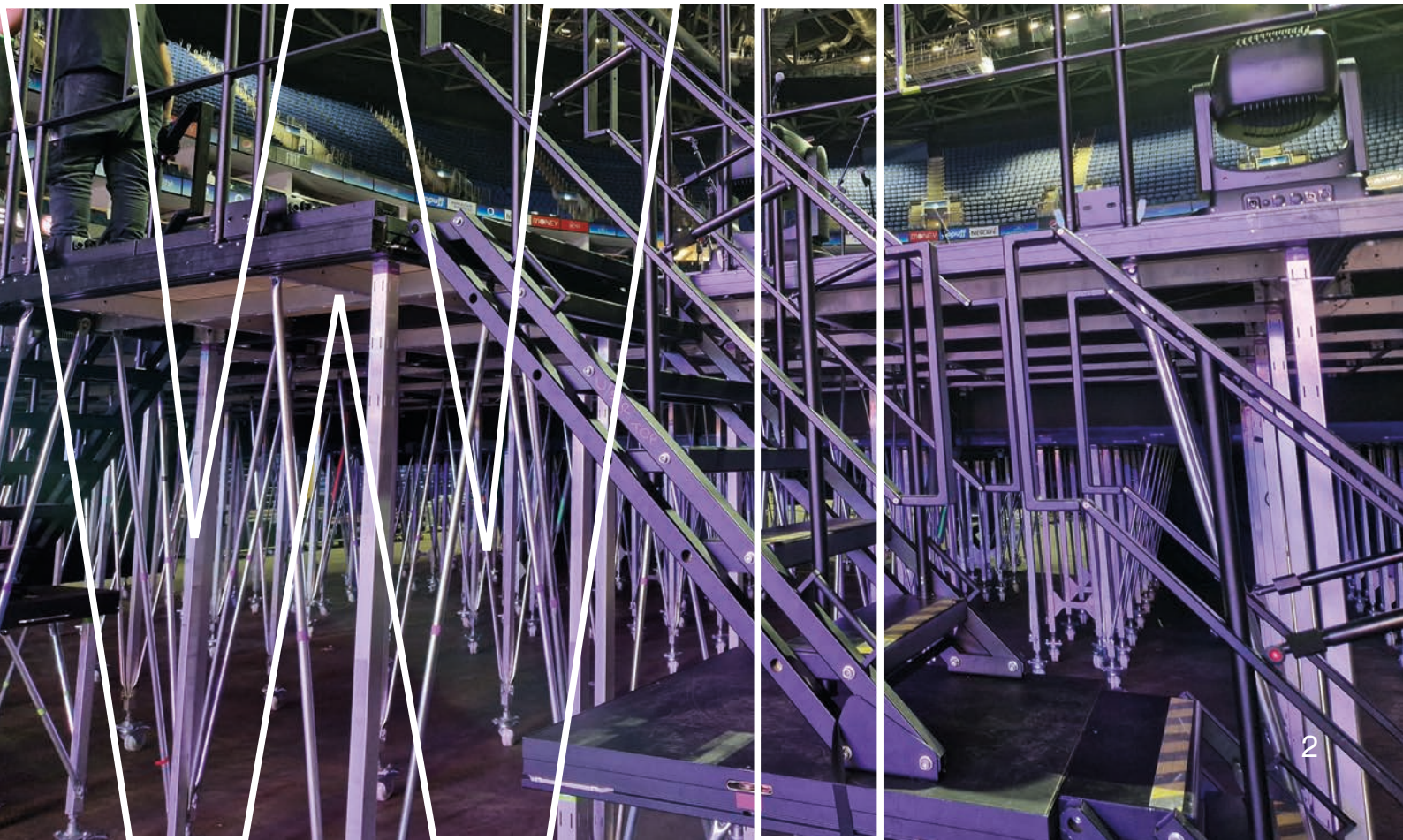
The WISTAGE system is a complete performer stage for all sorts of events. When we designed it, the objective was to create a flexible, quick and easy to setup staging solution for touring and other events.

User experience shows the WISTAGE system is a flexible 360° system that has the potential to bring to life any creative stage concept you can think of. It can be static or on wheels, for indoor or outdoor use as you wish.

Our standard top finish is black anti slip but on demand we can produce any finish and color you desire. Handrails, stairs, WIDECKS, skins but also lifts from our WIMOTION system can easily be integrated as it all works together as one harmonized system. Download our tech sheet to learn more.



TESTBUILD, WESTLIFE | PIC BY WI



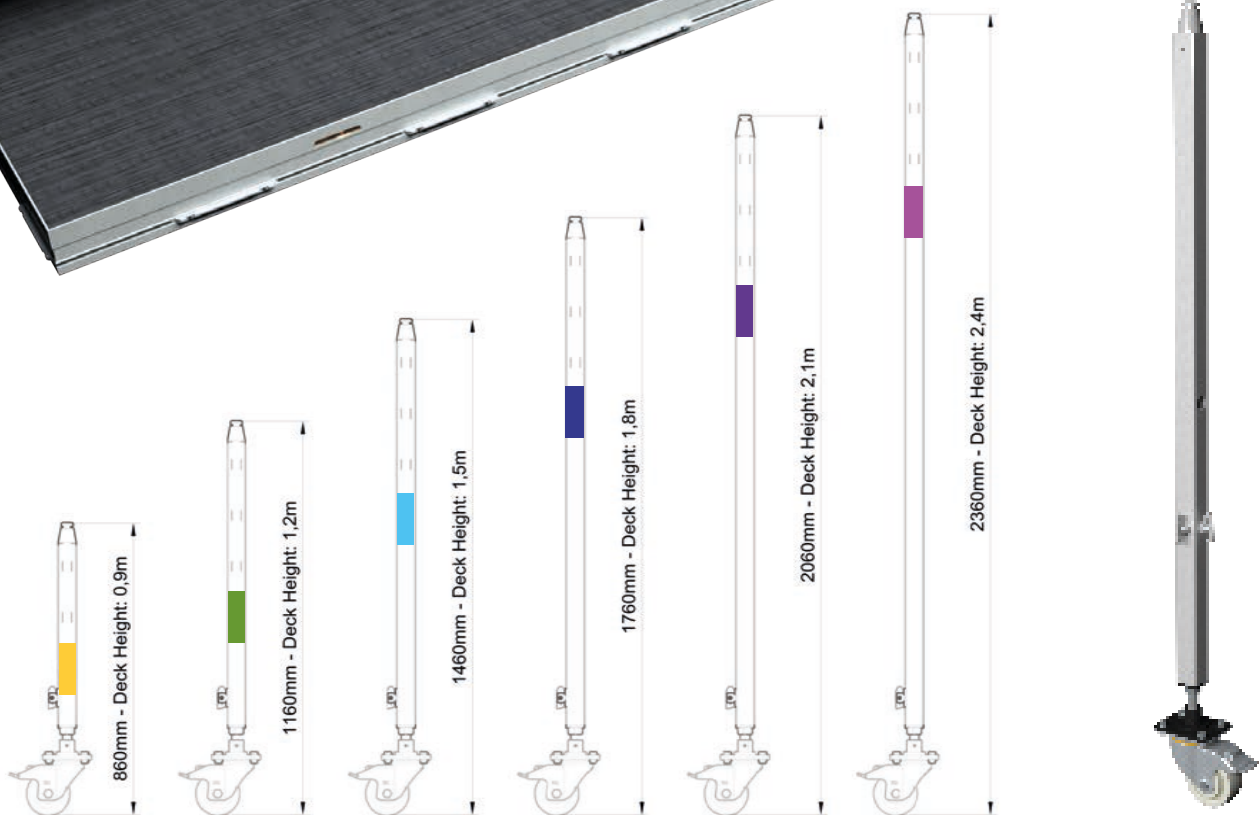
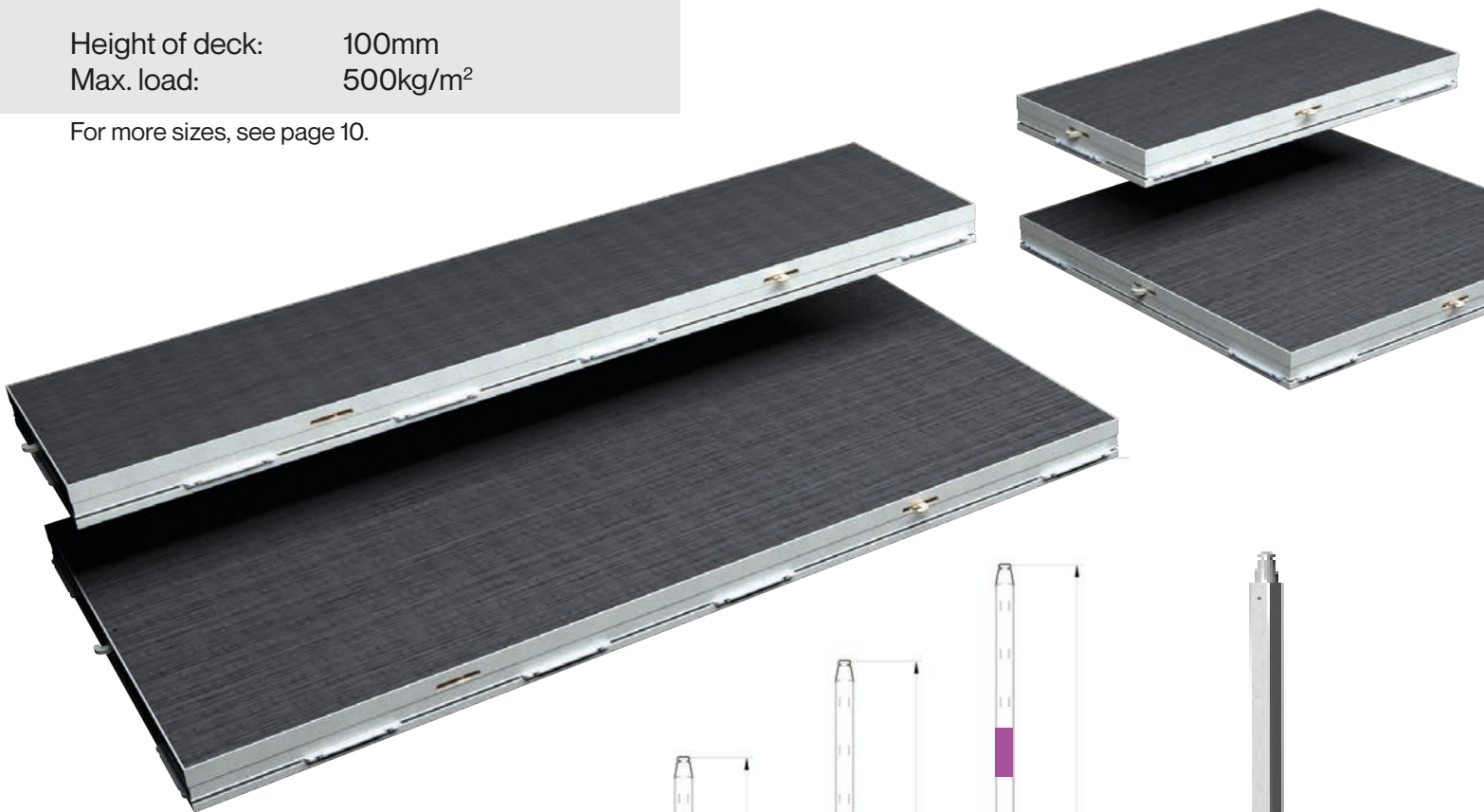
SPECIFICATIONS

DIMENSIONS STANDARD DECKS

- 2130mm x 1065mm weight: 54,71 kg
- 2130mm x 533mm weight: 32,30 kg
- 1065mm x 1065mm weight: 32,29kg
- 1065mm x 533mm weight: 19,04 kg

Height of deck: 100mm
Max. load: 500kg/m²

For more sizes, see page 10.

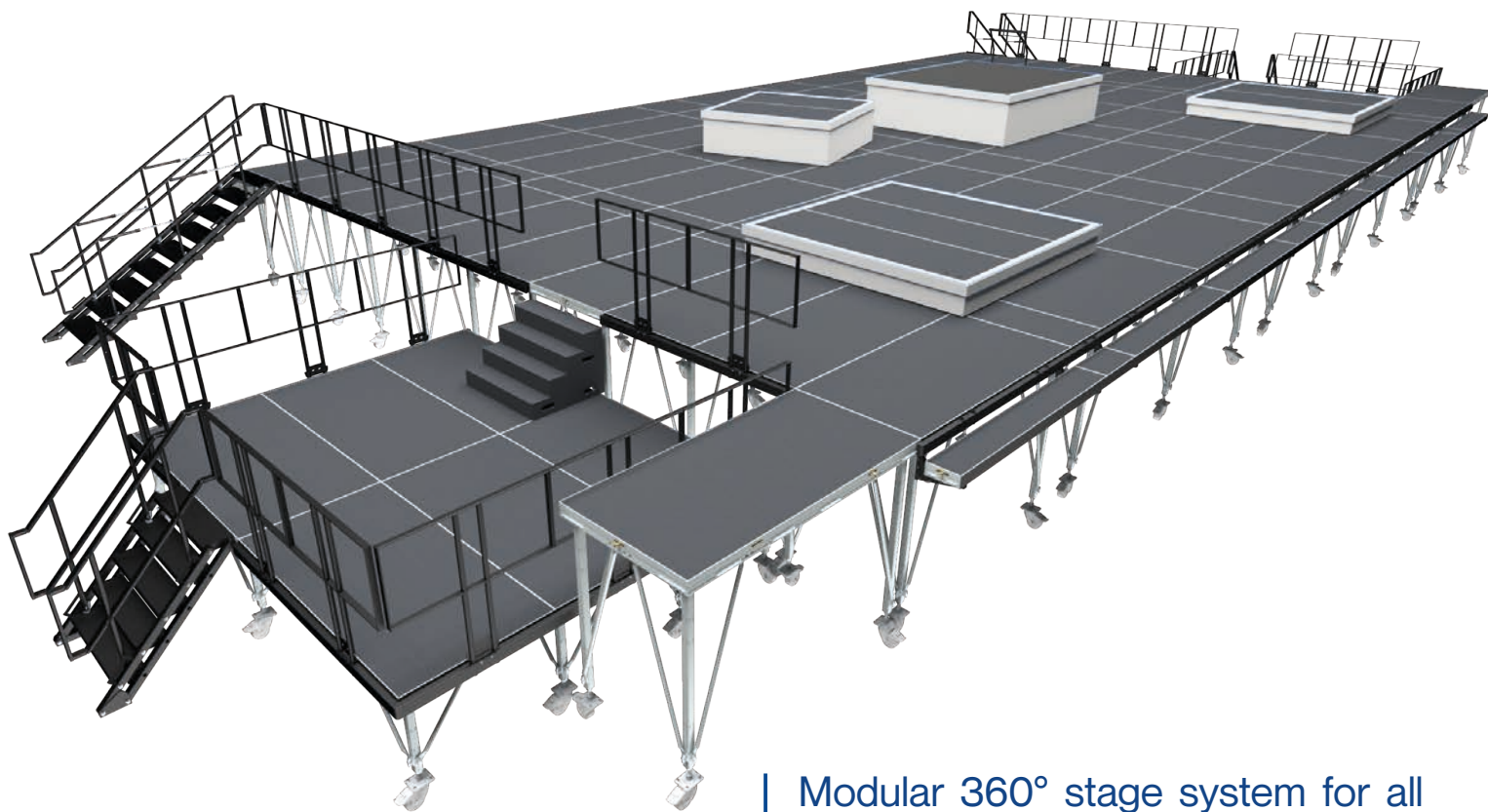


Our color coded aluminium legs can be fixed, adjustable (100mm) or adjustable caster legs (50mm)

STANDARD WIDECK SHAPES

Build your stage with confidence using WIDECK, the ultimate modular flooring system for professional touring stages.

WIDECK offers a wide range of standard shapes giving you the flexibility to create any layout you need, whether you're assembling a small setup or a grand stage. Lightweight design ensures easy handling and its solid construction long-lasting performance. Guaranteed stability and safety make the WIDECK very suited for high-pressure environments.



Modular 360° stage system for all kinds of events. Static or on wheels. With or without motion integration. For indoor or outdoor use. Large rental stock.



DETAILS



- Support legs connect via spigots which lock automatically



- Fast locking diagonals allow quick setup



Standard finish
in black antislip

Adjustable castor wheels



- Locking between decks with Coffin locks. (8mm Hex key)



- For extra stability, reinforced braces connect the stage modules and legs.

ACCESSORIES



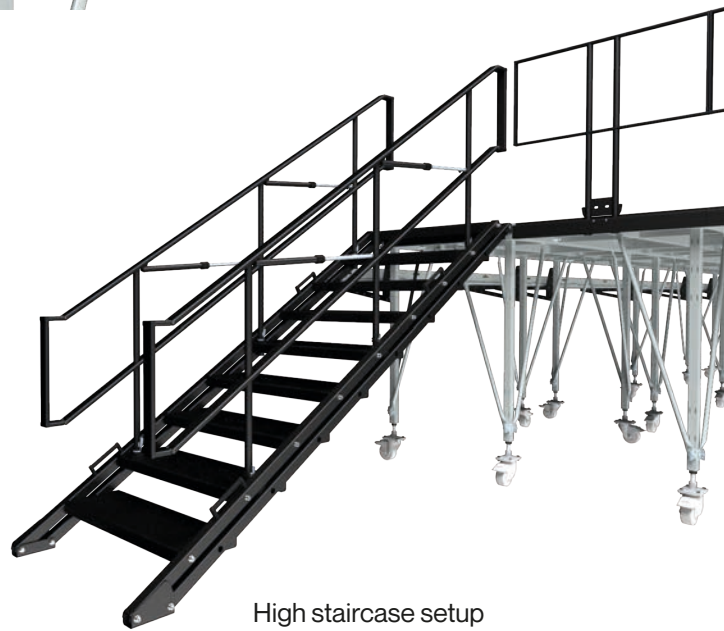
- Side profiles can be added to support handrails, led strips and other accessories. Profiles are standard black but can be powder coated in any color on demand.



- The hook on support can hold a sound or light shelf.

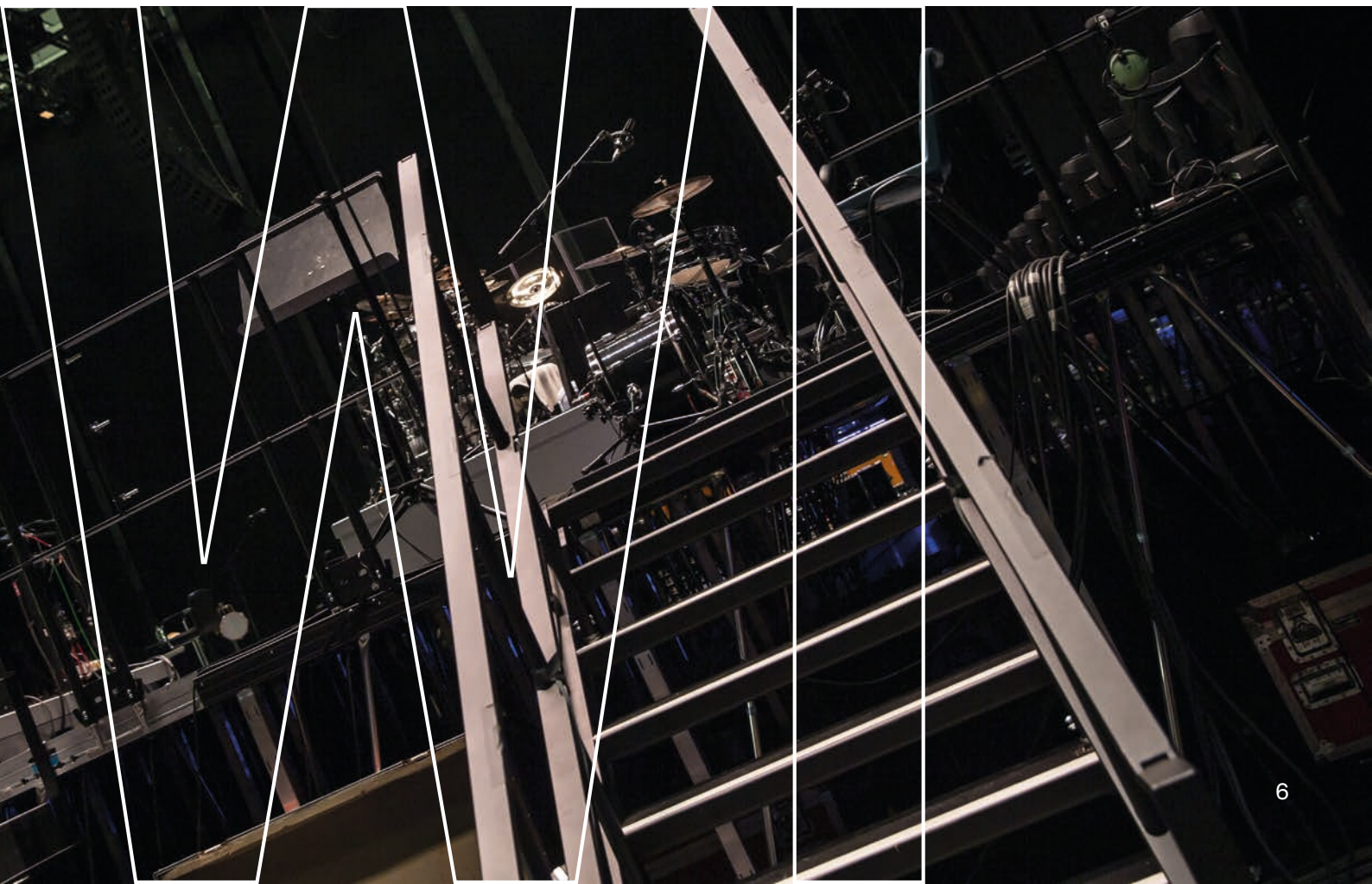


Low staircase setup



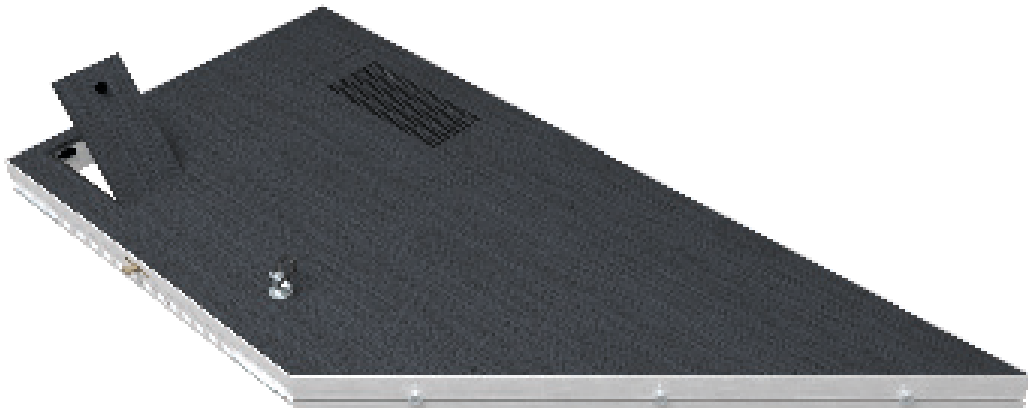
High staircase setup

TESTBUILD LONDON, GENESIS | PIC BY LINDSAY CAVE



CUSTOM ELEMENTS

Every production has its own custom demands and special needs. The WIDECK is customizable in every way you can think of: size, shape, holes, hatches, pins, attachments, rings, fire pits, power feeds.... Name it, and it's possible.



Custom deck



Custom leg

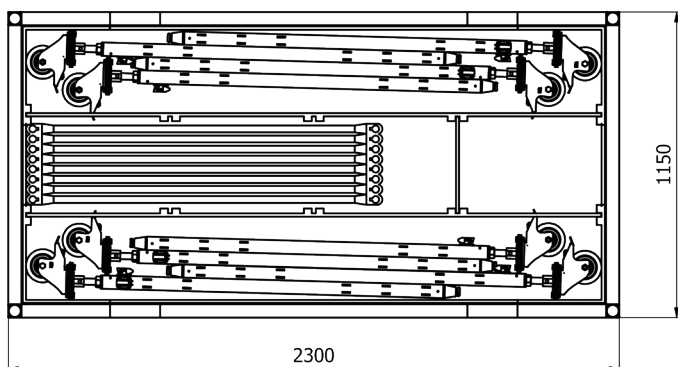
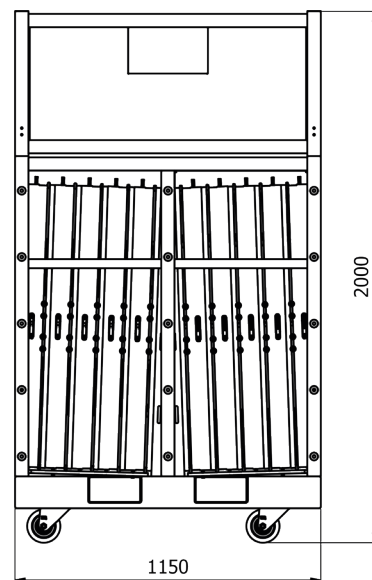
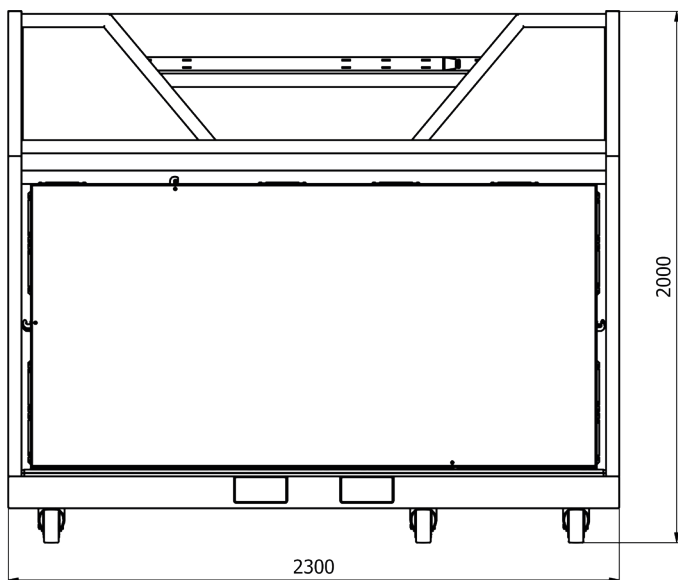
LIGHT SHELF, GENESIS | PIC BY LINDSAY CAVE



TRANSPORT

Dollies are provided to transport all the decks in a practical, stackable and safe way. Decks, legs and diagonals are all stored together in the WISTAGE dolly that has been specifically designed to make a build quick and easy with every piece always close by. WI can meet all needs. Do you have a special request? Let us know. Custom dollies are designed and fabricated on demand.

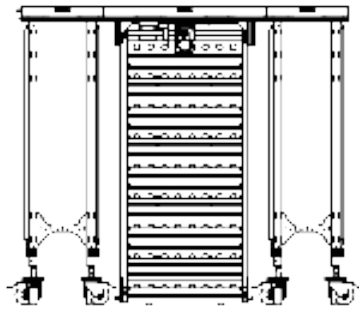
DRAWING



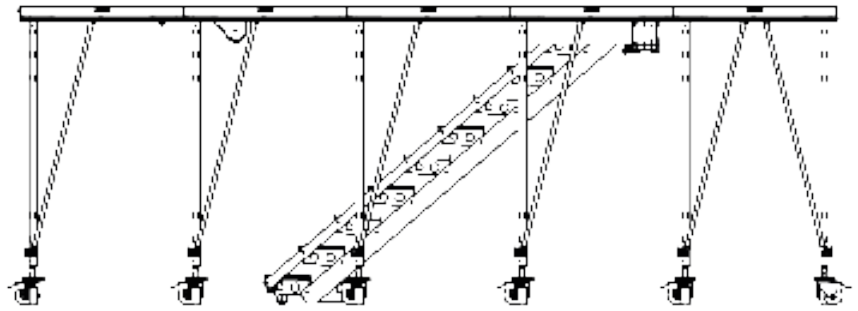
Total weight dolly with 10 decks: **1173kg**

WI INTEGRATED DEVICES

Pantograph stairs are neatly integrated in the rolling stage.
They smoothly and quickly unfold to allow performers to arise
on stage for an extra high impact effect



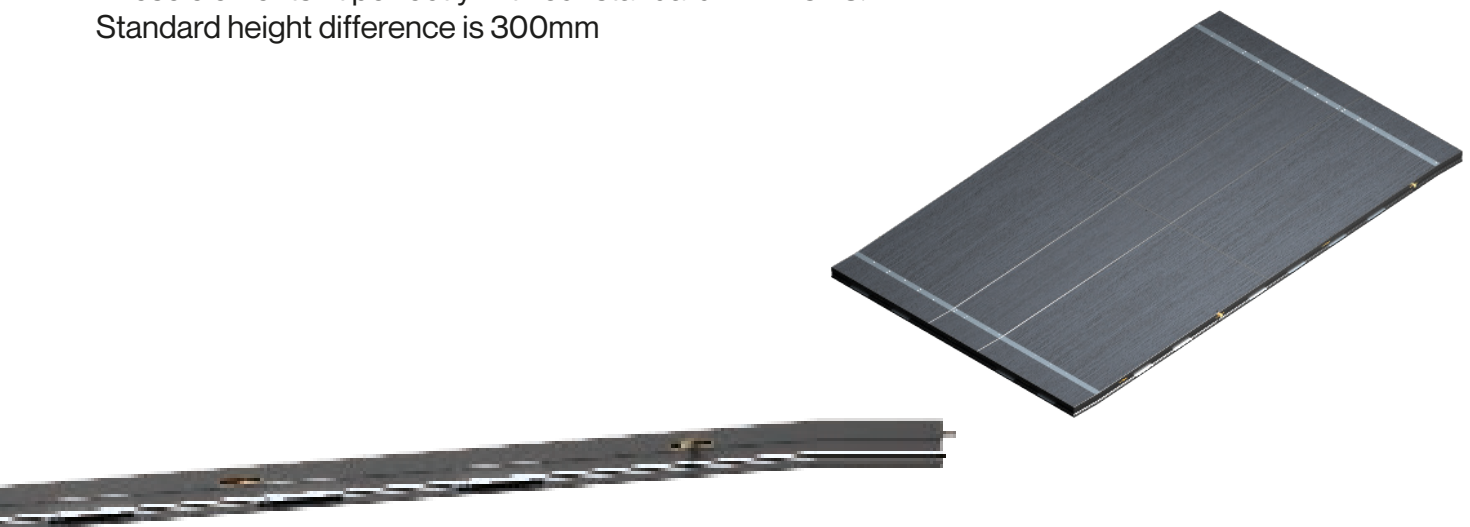
PANTOGRAPH STAIRS, TECHNICAL DRAWING



PANTOGRAPH STAIRS, FULLY INTEGRATED IN THE STAGE FLOOR

INTEGRATED RAMPS

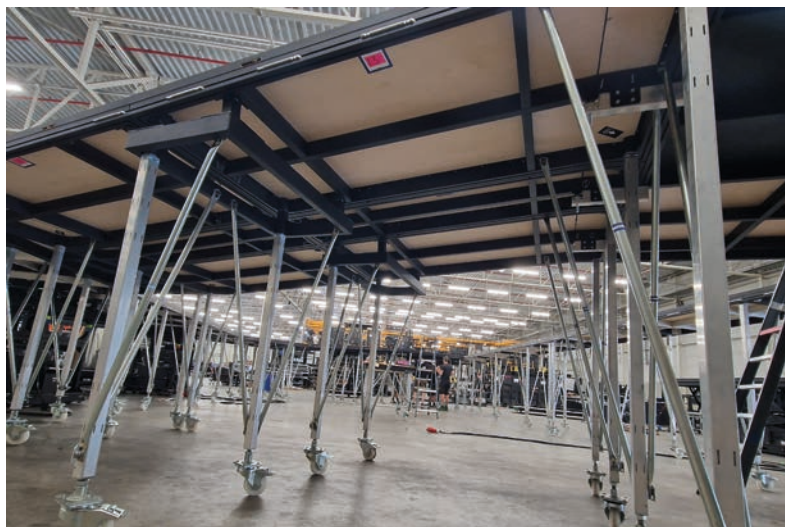
Special WIDECK elements at an angle to connect level differences with an inclined plane.
These elements fit perfectly with our standard WIDECKS.
Standard height difference is 300mm



HIGHLIGHTS



TESTBUILD WI, SCORPIONS - VIDEO SCREENS | PIC BY WI



TESTBUILD WI, AYLIVA - RAMPS | PIC BY WI

Large open area to store flight cases, ...

Side profiles with video screen support

The hook on support can hold a sound or light shelf

TESTBUILD WI, GENESIS - LIGHT SHELVES | PIC BY WI



WIDECK ELEMENTS

Standard Platforms

Platform size (in mm)

0533 x 0533

1065 x 0533

1065 x 1065

1597 x 1065

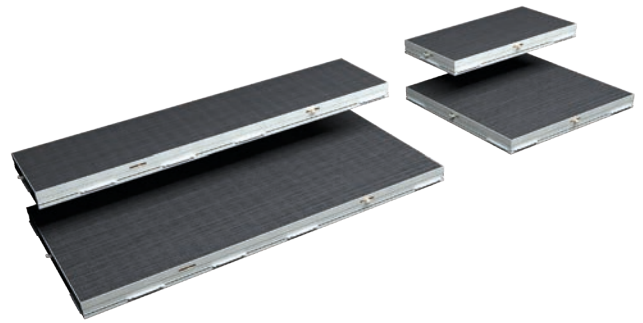
2130 x 0533

2130 x 0508

2130 x 1065

3195 x 508

* Custom configurations available. Call for details.



Standard Shelf Platforms

Platform size (in mm)

0533 x 0266

1065 x 0266

2130 x 0266

* Custom configurations available. Call for details.

Triangular Platforms

Platform size (in mm)

0533 x 0533

0533 x 1065

1065 x 1065

2130 x 1065

* Custom configurations available. Call for details.

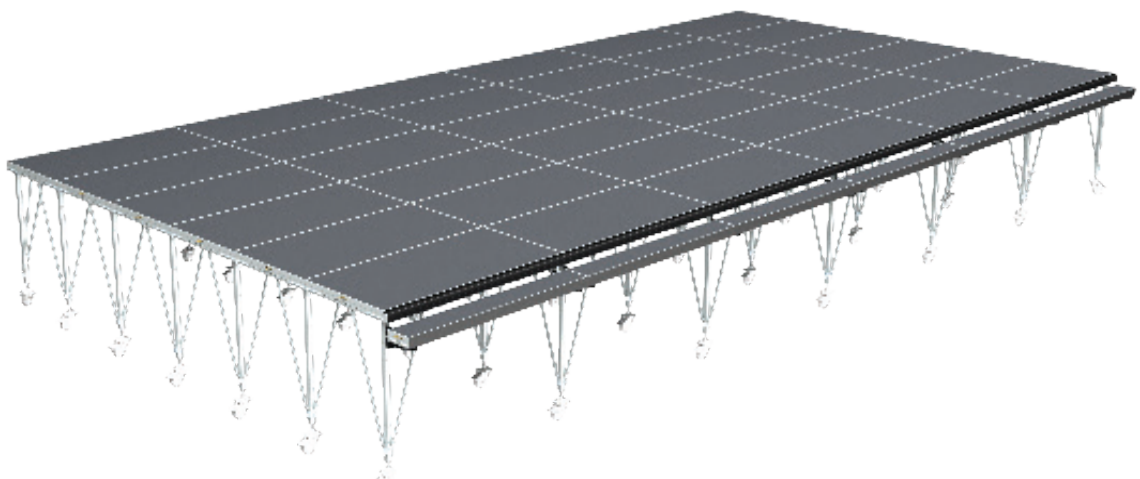
Ramps

Height difference - 300mm

2130 x 0533 Top & Bottom

2130 x 1065 Top & Bottom

* Custom configurations available. Call for details.



Standard Legs

Leg height

150 mm

200 mm

250 mm

300 mm

450 mm

600 mm

750 mm

900 mm

1050 mm

1200 mm

1350 mm

1500 mm

1650 mm

1800 mm

1950 mm

2100 mm

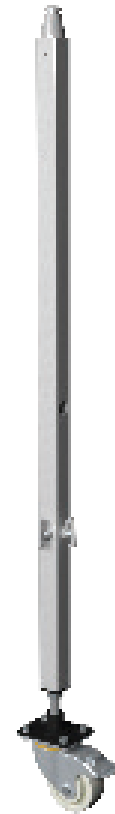
2250 mm

2400 mm

2550 mm

2700 mm

* Custom configurations available. Call for details.



Diagonals

Length

for 600 mm leg

for 750 mm leg

for 900 mm leg

for 1050 mm leg

for 1200 mm leg

for 1350 mm leg

for 1500 mm leg

for 1650 mm leg

for 1800 mm leg

for 1950 mm leg

for 2100 mm leg

for 2250 mm leg

for 2400 mm leg

for 2550 mm leg

for 2700 mm leg

* Custom configurations available. Call for details.